

# TO COLLECT, PROTECT, AND SERVE

## BEHIND THE SCENES AT THE LIBRARY OF VIRGINIA

### MATCH ACTIVITY



Connie the Conservator

The Archival Enemies love to make mischief in library collections. Identifying the damage they do is the first step in figuring out how to banish them for good. Help me match each enemy with his or her traits.

Bartholomew B. Bug



Acid Andy



Surge



Mildred Mold



Burns buildings, documents, and more. Can leave soot and heat damage on materials.

Eats holes into paper and glue. Leaves droppings.

Warps and discolors paper. Can make materials disintegrate. Fades or washes away ink and glue. Encourages mold to grow.

Leaves permanent ink marks on paper and other materials.

At certain wavelengths, destroys paper and fades ink.

Present in most paper and leather, destroying them over time and fading ink.

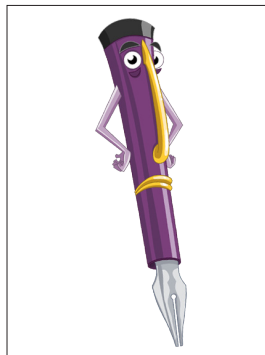
Ruins electronic storage devices. Corrupts electronic data.

Corrupts and damages electronic records through malicious software.

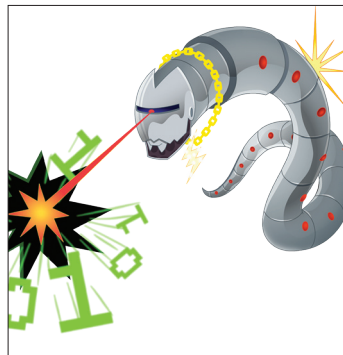
Grows on paper and other materials, obscuring print and breaking down paper.



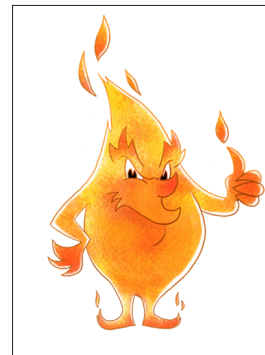
Liquid Lenny



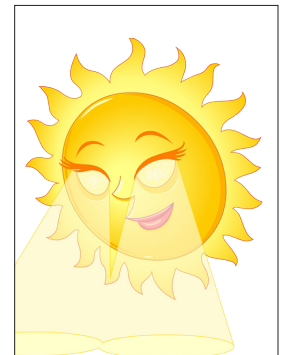
Pendleton the Pen



Worm.i.am



Fred the Flame



Lucia Light



LIBRARY OF VIRGINIA

800 East Broad Street | Richmond, Virginia  
23219-8000 | [www.lva.virginia.gov](http://www.lva.virginia.gov)